

# BLOCTECH I

UNE ZONE D'ÉCLAIRAGE IMPRESSIONNANTE GRÂCE À UN SEUL LUMINAIRE AVEC UNE SOURCE LUMINEUSE LED 2 W / 5 W

- un seul luminaire peut éclairer une surface allant jusqu'à 244 m<sup>2</sup>
- avec BLOCTECH I éclairer le chemin d'évacuation, la distance entre les luminaires peut atteindre 38 mètres
- BLOCTECH I s'inscrit dans la forme parfaite du cercle et se fond dans tout intérieur
- L'électronique du luminaire est scellée dans le boîtier et protégée de l'humidité de l'extérieur grâce offrant ainsi un IP65 élevé.

IMPRESSIVE ILLUMINATION AREA THANKS TO THE ONLY ONE FITTING WITH 2 W / 5 W POWER LED LIGHT SOURCE.

- self contained fitting with IP65 protection level designed to lighten areas up to 244 m<sup>2</sup>
- the distance between fittings may be up to 38 meters
- BLOCTECH I has a perfect circular shape, which ensures that the fitting matches any interior style
- electronics are enclosed in a sealed housing and protected against humidity from the outside.



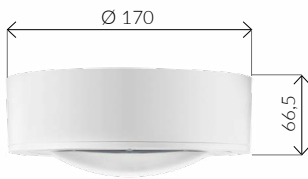


# BLOCTECH I

A1S



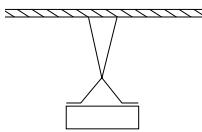
Dimensions [mm]  
Dimensions [mm]



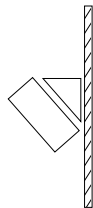
Accessoires  
Accessories



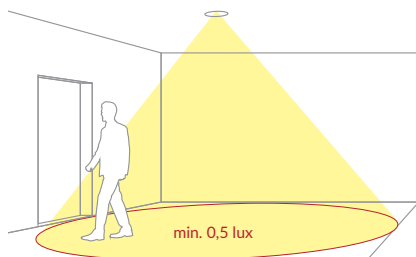
Set pour montage encastré  
option with recessed mount kit applied



support pour montage suspendu  
bracket for suspended mounting



option montage a 30°  
mounting option with 30° bracket applied



IP65, BAES Ambiance - Anti panique / Zone a risque (520 lm) - espaces ouverts  
IP65, antipanic lighting (520 lm)

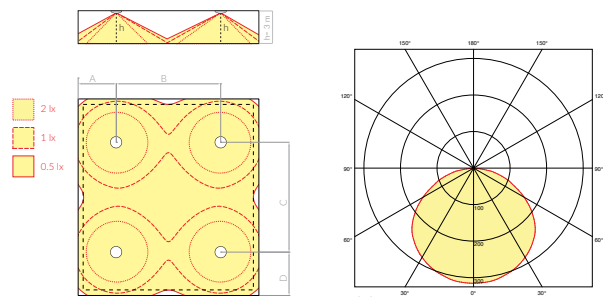
Model		
<b>BLOCTECH I A1S 1H 450 TC</b>	1 h	LiFePO4 3.2 V 1.5 AAh
<b>BLOCTECH I A1S 1H 450 D2</b>	1 h	LiFePO4 3.2 V 1.5 AAh

**Principales spécifications techniques**  
Technical parameters


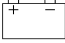
Application Application	BAES Ambiance - Anti panique Antipanic lighting
Source lumineuse Light source	<b>2 LED</b>
Autonomie de la batterie Battery operating time	1 h
Mode Mode	<b>NM</b>
Flux lumineux Luminous flux	520 lm
Test Testing	D2: DATA/Supervision controle TC: Performance SATI
Alimentation électrique Power supply	210÷250 V AC 50÷60Hz;
Indice de protection Protection degree	IP65
Indice Impacts mécaniques externes Protection against mechanical impacts	IK08
Classe d'isolation Insulation class	II
Températures de fonctionnement Temperature range	t <sub>s</sub> +10 °C ÷ +40 °C
Couleurs Colour	<input type="checkbox"/> RAL 9003 <input checked="" type="checkbox"/> RAL gray or black

**Photometrie**  
Photometry

(m)			190,5 x 200 x 70
2,5	4,6	11,2	 800 mm 1200 mm 400 szt. / pcs 
3,0	5,1	12,5	
4,0	5,7	13,9	
5,0	5,9	15,4	
6,0	6,6	16,2	
7,0	6,7	17,4	
8,0	6,5	18,2	
9,0	6,4	19,5	
10,0	6,4	19,9	



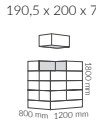
IP65, BAES Ambiance - Anti panique / Zone a risque (520 lm) - espaces ouverts  
 IP65, antipanic / high risk task area lighting (520 lm)

Model		
<b>BLOCTECH I ASS 1H 450 TC</b>	1 h	LiFePO4 3.2 V 1.5 AAh
<b>BLOCTECH I ASS 1H 450 D2</b>	1 h	LiFePO4 3.2 V 1.5 AAh

**Principales spécifications techniques**  
 Technical parameters

Application Application	BAES Ambiance - Anti panique Antipanic lighting
Source lumineuse Light source	<b>2 LED</b>
Autonomie de la batterie Battery operating time	1 h
Mode Mode	<b>NM</b>
Flux lumineux Luminous flux	520 lm
Test Testing	D2: DATA/Supervision controle TC: Performance SATI
Alimentation électrique Power supply	210÷250 V AC 50÷60Hz;
Indice de protection Protection degree	IP65
Indice Impacts mécaniques externes Protection against mechanical impacts	IK08
Classe d'isolation Insulation class	II
Températures de fonctionnement Temperature range	$t_3 +10\text{ °C} \div +40\text{ °C}$
Couleurs Colour	<input type="checkbox"/> RAL 9003 <input checked="" type="checkbox"/> RAL gray or black

**Photometrie**  
 Photometry

[m]	A	B	190,5 x 200 x 70
2,5	6,5	13,7	 400 szt. / pcs
3,0	7,5	15,8	
4,0	8,9	18,8	



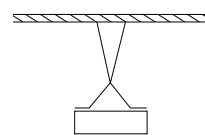
Dimensions [mm]  
 Dimensions [mm]



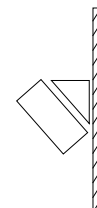
Accessoires  
 Accessories



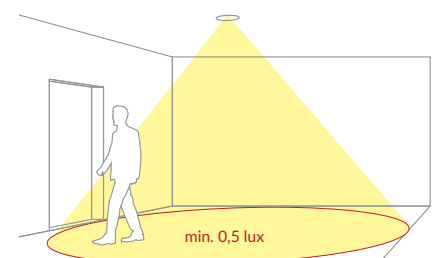
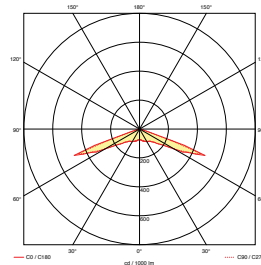
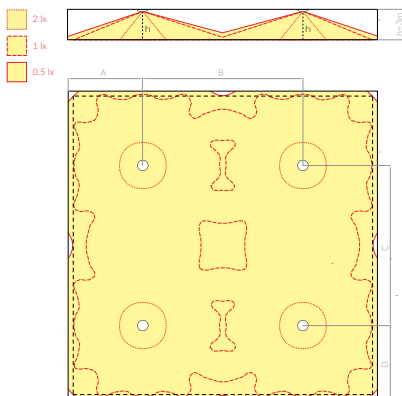
Set pour montage encastré  
 option with recessed mount kit applied



support pour montage  
 suspendu  
 bracket for suspended  
 mounting



option montage a 30°  
 mounting option with 30°  
 bracket applied

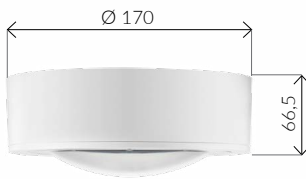


# BLOCTECH I

ACS



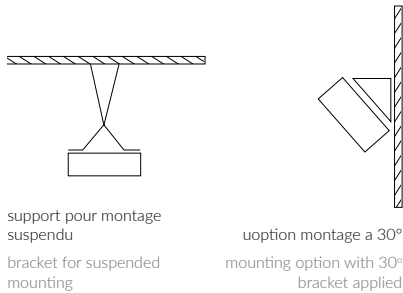
Dimensions [mm]  
Dimensions [mm]



Accessoires  
Accessories

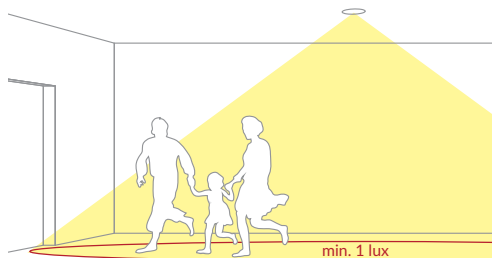


Set pour montage encastré  
option with recessed mount kit applied



support pour montage suspendu  
bracket for suspended mounting

option montage a 30°  
mounting option with 30° bracket applied



BAES Ambiance pour couloir bas (520 lm)  
Escape route lighting for low corridor (520 lm)

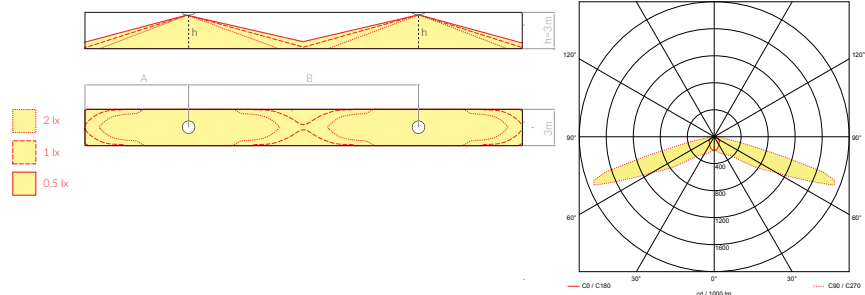
Model		
<b>BLOCTECH I ACS 1H 450 TC</b>	1 h	LiFePO4 3.2 V 1.5 AAh
<b>BLOCTECH I ACS 1H 450 D2</b>	1 h	LiFePO4 3.2 V 1.5 AAh

**Principales spécifications techniques**  
Technical parameters


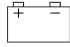
Application	BAES Ambiance Escape route lighting
Source lumineuse Light source	<b>2 LED</b>
Autonomie de la batterie Battery operating time	1 h
Mode Mode	<b>NM</b>
Flux lumineux Luminous flux	520 lm
Test Testing	D2: DATA/Supervision controle TC: Performance SATI
Alimentation électrique Power supply	210÷250 V AC 50÷60Hz;
Indice de protection Protection degree	IP65
Indice Impacts mécaniques externes Protection against mechanical impacts	IK08
Classe d'isolation Insulation class	II
Températures de fonctionnement Temperature range	t <sub>a</sub> +10 °C ÷ +40 °C
Couleurs Colour	<input type="checkbox"/> RAL 9003 <input checked="" type="checkbox"/> RAL gray or black

**Photométrie**  
Photometry

[m]	A	B	190,5 x 200 x 70 800 mm 1200 mm 400 szt. / pcs 
2,5	8.8	19.4	
3,0	10	22	
4,0	12.2	27.2	
5,0	13.6	31.8	
6,0	14	35.4	
7,0	10.2	38	
8,0	5.2	33	
9,0	3.8	27	
10,0	4.0	14.9	



IP65, BAES Ambiance (520 lm)  
IP65, Escape route lighting (520 lm)


Model		
<b>BLOCTECH I AFS 1H 450 TC</b>	1 h	LiFePO4 3.2 V 1.5 AAh
<b>BLOCTECH I AFS 1H 450 D2</b>	1 h	LiFePO4 3.2 V 1.5 AAh

**Principales spécifications techniques**  
Technical parameters

Application	BAES Ambiance Escape route lighting
Source lumineuse Light source	<b>2 LED</b>
Autonomie de la batterie Battery operating time	1 h
Mode Mode	<b>NM</b>
Flux lumineux Luminous flux	520 lm
Test Testing	D2: DATA/Supervision controle TC: Performance SATI
Alimentation électrique Power supply	210÷250 V AC 50÷60Hz:
Indice de protection Protection degree	IP65
Indice Impacts mécaniques externes Protection against mechanical impacts	IK08
Classe d'isolation Insulation class	II
Températures de fonctionnement Temperature range	t <sub>a</sub> +10 °C ÷ +40 °C
Couleurs Colour	<input type="checkbox"/> RAL 9003 <input checked="" type="checkbox"/> RAL gray or black

**Photometrie**  
Photometry

[m]	A	B
2,5	6	14
3,0	6.4	15.6
4,0	7.2	17.8
5,0	7.8	19.4
6,0	8.4	20.8
7,0	8.7	22
8,0	9	23.2
9,0	9.3	24
10,0	9.6	24.6

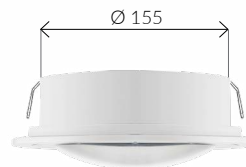
190,5 x 200 x 70  
800 mm / 1200 mm  
400 szt. / pcs  




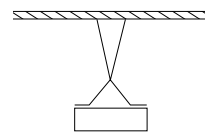
Dimensions [mm]  
Dimensions [mm]



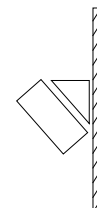
Accessoires  
Accessories



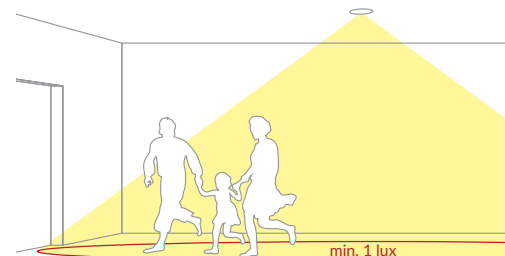
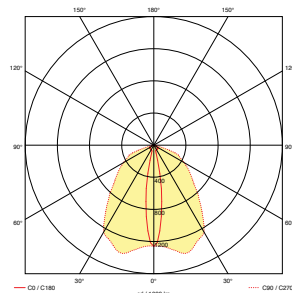
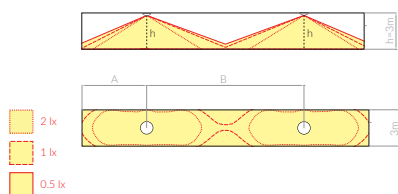
Set pour montage encastré  
option with recessed mount kit applied



support pour montage  
suspendu  
bracket for suspended  
mounting



uoption montage a 30°  
mounting option with 30°  
bracket applied

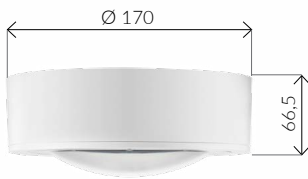


# BLOCTECH I

## AWS



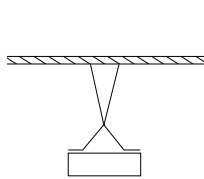
Dimensions [mm]  
Dimensions [mm]



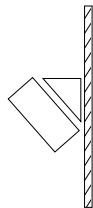
Accessoires  
Accessories



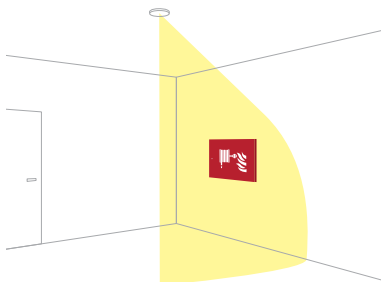
Set pour montage encastré  
option with recessed mount kit applied



support pour montage  
suspendu  
bracket for suspended  
mounting



option montage a 30°  
mounting option with 30°  
bracket applied



BAES Ambiance avec flux lumineux oblique (520 lm)  
Final exit / fire-protection devices lighting (520 lm)

Model		
<b>BLOCTECH I AWS 1H 450 TC</b>	1 h	LiFePO4 3.2 V 1.5 AAh
<b>BLOCTECH I AWS 1H 450 D2</b>	1 h	LiFePO4 3.2 V 1.5 AAh

**Principales spécifications techniques**  
Technical parameters

Application Application	BAES Ambiance - Anti panique Lighting of the final exit / fire-protection devices
Source lumineuse Light source	<b>2 LED</b>
Autonomie de la batterie Battery operating time	1 h
Mode Mode	<b>NM</b>
Flux lumineux Luminous flux	520 lm
Test Testing	D2: DATA/Supervision controle TC: Performance SATI
Alimentation électrique Power supply	210÷250 V AC 50÷60Hz;
Indice de protection Protection degree	IP65
Indice Impacts mécaniques externes Protection against mechanical impacts	IK08
Classe d'isolation Insulation class	II
Températures de fonctionnement Temperature range	t <sub>a</sub> +10 °C ÷ +40 °C
Couleurs Colour	<input type="checkbox"/> RAL 9003 <input checked="" type="checkbox"/> RAL gray or black

**Photometrie**  
Photometry

[m]	A	B	190,5 x 200 x 70
2,5	4.4	10.2	<p>800 mm 1200 mm 400 szt. / pcs</p>
3,0	4.8	11.2	
4,0	5.5	13.0	
5,0	5.8	14.4	
6,0	5.7	15.4	
7,0	4.6	15.8	
8,0	3.5	15.2	
9,0	3.5	15	

